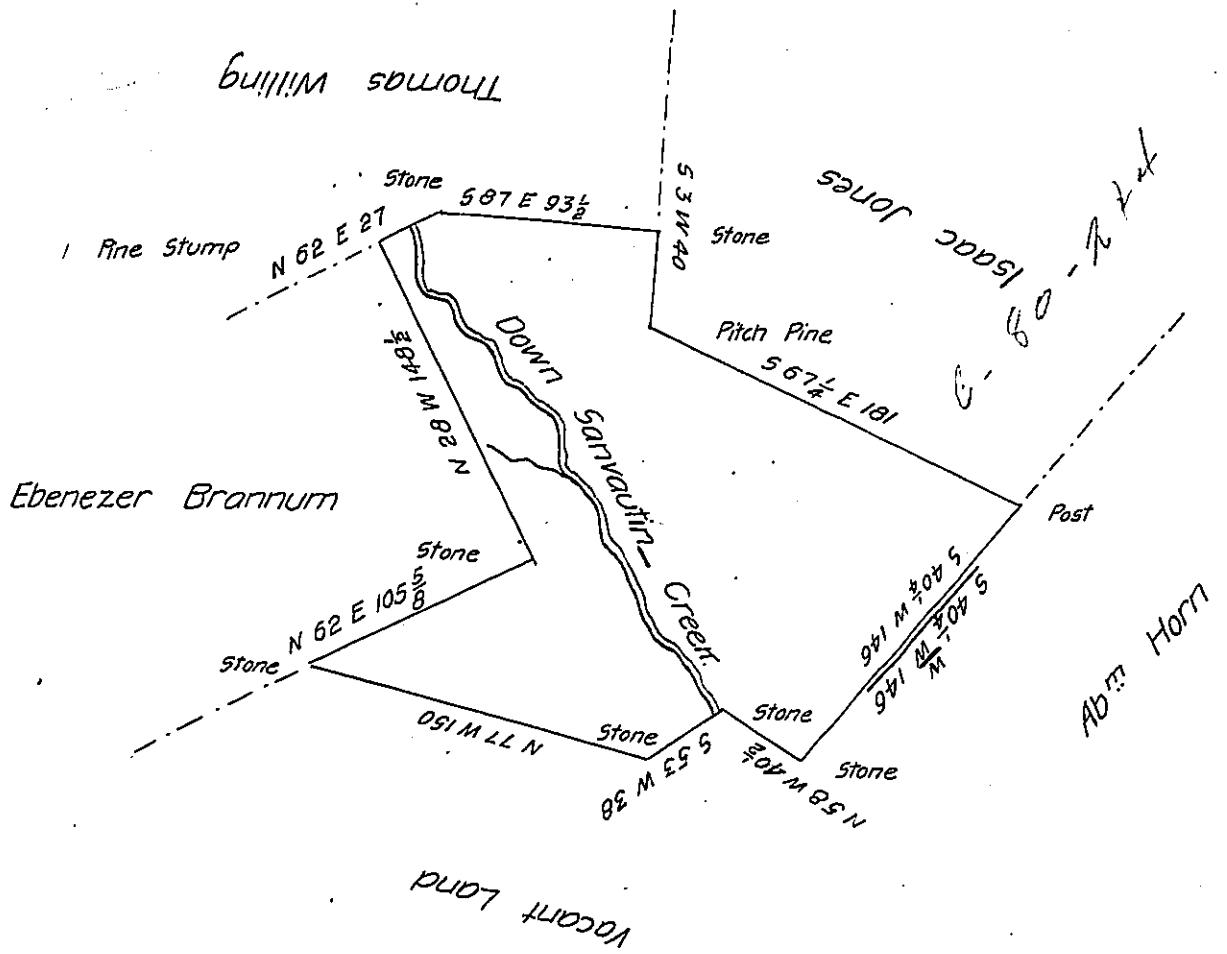


W



By virtue of a warrant dated the 14th day of May 1860 Surveyed
 the 30th day of May 1860 to R. S. Church the above described Tract
 of Land Situate on Sanvautin Creek in Milford Township Pike County
 Containing two hundred eleven acres and twenty two perches and
 the allowances of six per cent &c &c

To W^m H. Keim Esq.

W^m C. McCarty C.S.

Surveyor General of Penn^a

IN TESTIMONY that the above is a copy of the original remaining on file in
 the Department of Internal Affairs of Pennsylvania, made
 conformably to an Act of Assembly approved the 16th day of
 February, 1833, I have hereunto set my Hand and caused
 the Seal of said Department to be affixed at Harrisburg,
 this thirty-first day of October 1904

Loose A. Perry
 Secretary of Internal Affairs